





# Miyama's thatched village

# Snow Lantern Festival Map

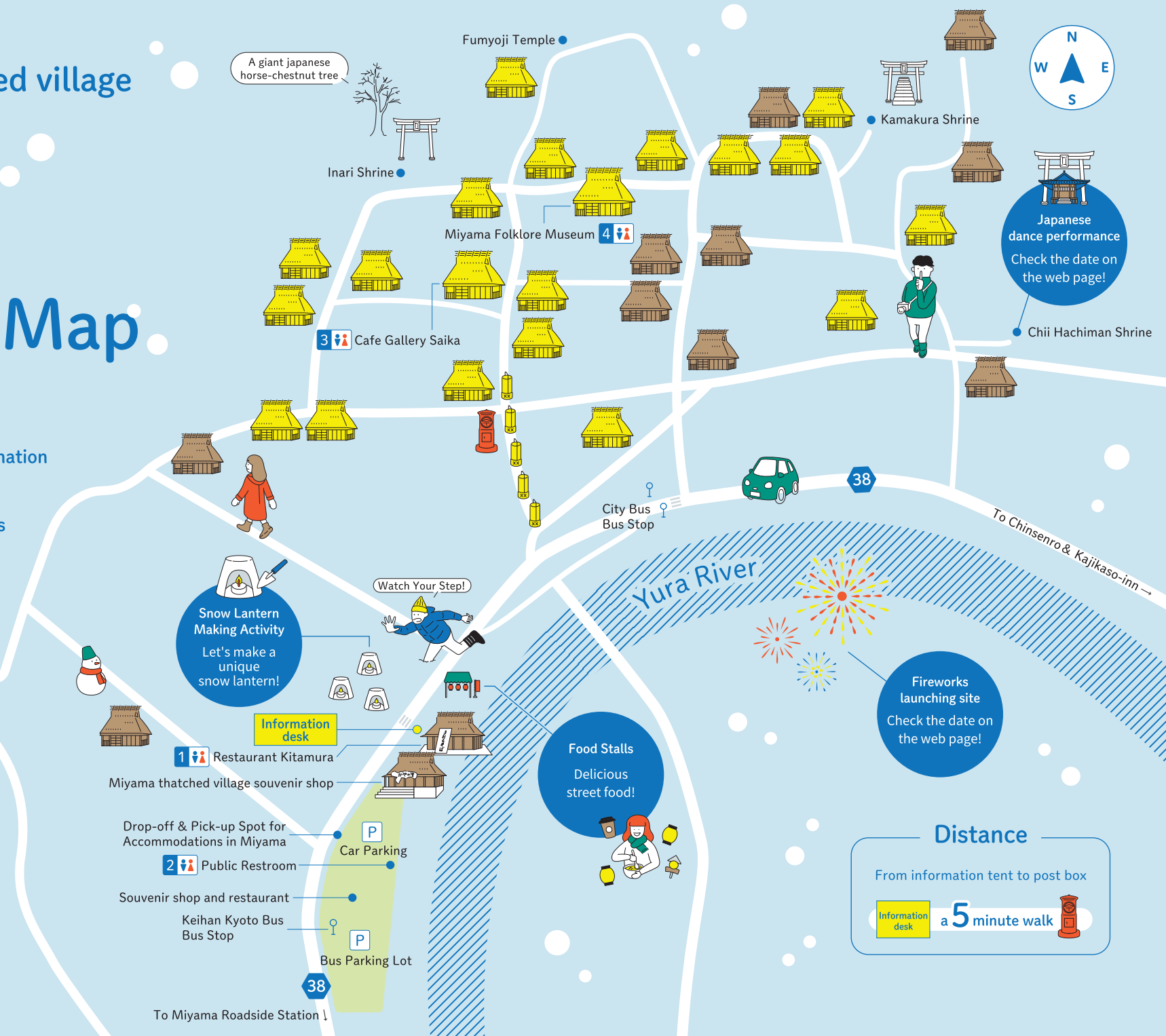
-  Thatched-roof Illumination
-  Thatched-roof houses
-  Lanterns
-  Restroom

**Public Restrooms**

There are four public toilets in the village.

**1** **2** **3** **4**

#1 is expected to get most crowded. Please also use others (#2-4)



**Fireworks launching site**  
Check the date on the web page!

**Distance**

From information tent to post box

Information desk a 5 minute walk

To Miyama Roadside Station ↓



# To visitors of Snow Lantern Festival

## Caring about local's life

Miyama's thatched village (Kayabuki-no-sato) is the village where local residents live. Almost most of thatched-roof houses are not tourist facilities but private houses. Please do not enter private property area (houses/fields) and enjoy scenery from the walking paths. After dark, please refrain from talking loudly and quietly stroll around the village.



## Use the crosswalk to cross the road

Please cross at crosswalks. Assume car drivers cannot see you even if you think you are visible, especially in snowy weather or in the dark. Wait to cross until a car has stopped completely and has indicated they see you.



## Beware of gaps while strolling around the village

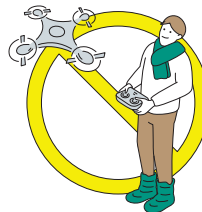
There are uncovered ditches (\*) on the side of roads in Miyama's thatched village. When snow accumulates, the boundary of roads and ditches is invisible and dangerous. Please watch your steps to avoid slips and falls.

(\*) They are irrigation canals.



## Drones are prohibited in and around Miyama's Thatched Village

Flying drones to take photographs in and around Miyama's thatched village (which is one of the National Preservation District for Groups of Traditional Buildings) is prohibited. As there are a large number of visitors in the village during the festival period, flying a drone is strictly prohibited to prevent any accident due to falling of the drone.



## Snow Lantern Making Activity

Join making snow lanterns to glow Miyama's thatched village. Get a snow lantern making kit (bucket, mini-shovel and candle) at reception and create your original snow lantern. Lit candle and install in the venue.



## Food Stalls

Enjoy Miyama's delicacies at food stalls during the festival period. Warm and tasty selections of on-the-go dishes using local ingredients (such as Miyama's venison meats or Miyama's tasty rice) are available.

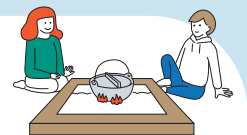


## Winter Fireworks

Winter fireworks collaborated with illuminated thatched roofs in Miyama's thatched village. Duration of firework is expected to be 5 minutes. You can view them from anywhere within the venue.

## Stay overnight in Miyama after enjoying the festival

If you're planning to visit Miyama, check out traditional accommodations for memorable time in Japanese countryside. While giving you a glimpse of countryside life, more than 30 accommodations in Miyama also offers unique experiences like no other.



Accommodation list

The Official Travel Guide  
KYOTO MIYAMA



@kyotomiyama



@miyamanavi

## Inquiry

KYOTO MIYAMA TOURISM ASSOCIATION  
info@miyama-kyoto.com (Closed on Wed.)

## Official Website

<http://www.yukitouro.jp/>